

# INTEGRATIVE BIOLOGY & PHYSIOLOGY

## Spring 2008 Seminar Series

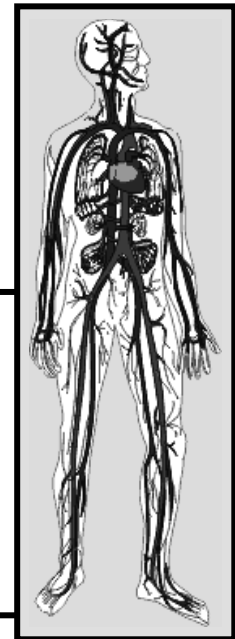
**Daniel C. Sigg, M.D., Ph.D.**

*CRDM Biotechnology, Medtronic, Inc.*

*will speak on*

## HCN AND CARDIAC PACEMAKING

Normal rhythm in a healthy human heart originates from the natural biological pacemaker, the sinoatrial (SA) node, located in the right atrium. A key ion channel responsible for cardiac pacemaking is the hyperpolarization-activated cyclic-nucleotide-modulated (HCN) channel (aka pacemaker channel). Results from a series of electrophysiological in silico, in vitro cellular and multi-cellular studies of HCN will be reviewed, and the physiological, pathophysiological and pharmacological importance of this channel will be further discussed.



**THURSDAY, APRIL 24<sup>TH</sup>**

**12:15 PM**

**6-135 JACKSON HALL**

***Refreshments will be served 15 minutes prior to seminar.***