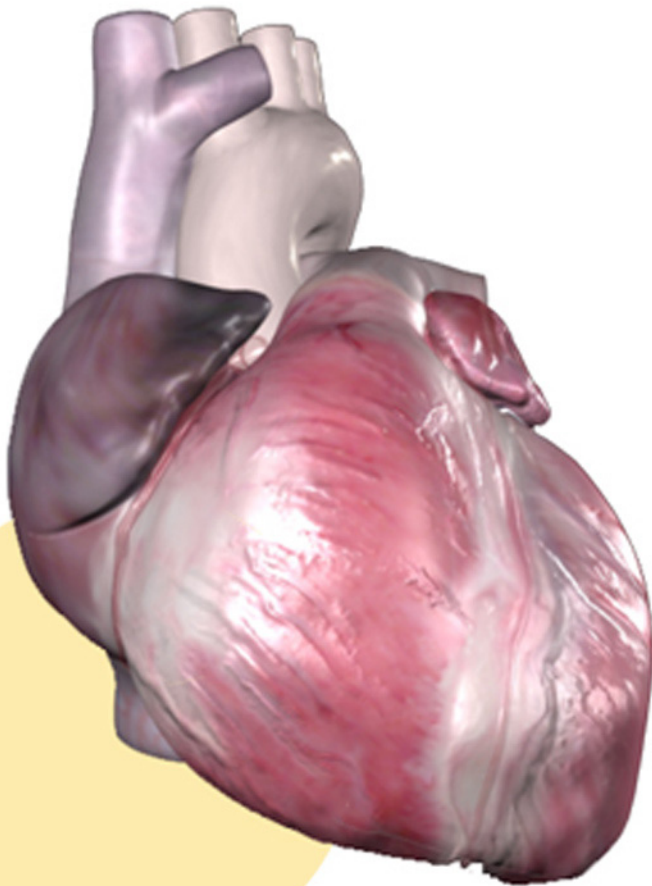




Advanced Cardiac Physiology & Anatomy

January 4-10, 2010



**Integrative Biology
and Physiology**

**University of Minnesota
Medical School**

This intense, one-week course is designed for biomedical engineers who want to develop their understanding of the physiology and anatomy of the heart. Using both lecture and laboratory, it will cover basic science and clinically-related topics.

Unique features of the course will include: basic cardiac physiology and associated clinical lectures; a concentrated gross anatomy laboratory experience using human cadavers, small groups of students will be guided through a detailed dissection of the human chest wall, thoracic cavity and heart; live demonstrations (e.g., 12-lead EKG and echocardiography); meet the professor lunches; and a keynote lecture.

REGISTRATION

Cost: \$3000. Course texts and related materials are provided, along with meals.

Deadline: December 5, 2009

Call us for more information or find registration materials on-line at

<http://physiology.med.umn.edu/>